



Short Breaks Update

Adults with Learning Disabilities

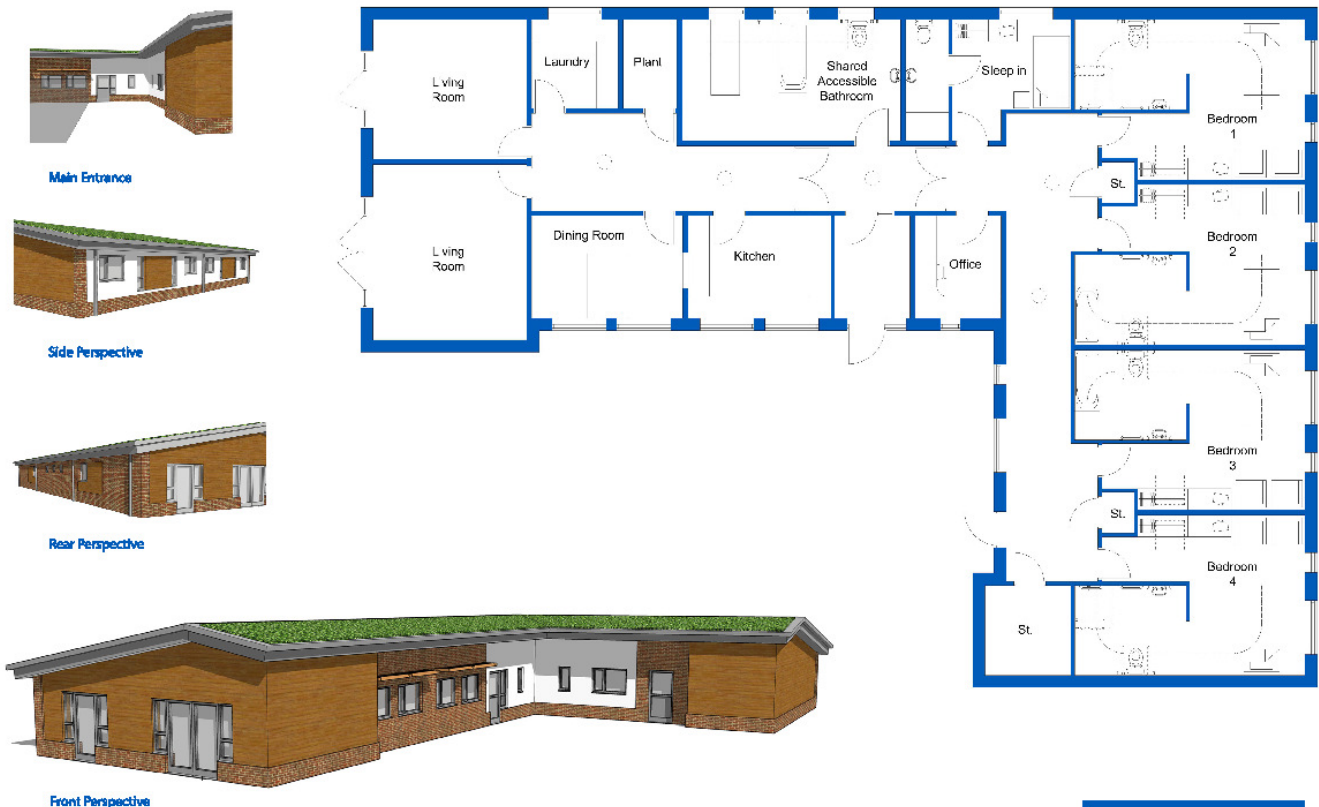
ISSUE 4: Short Breaks Update November 2009

As you know we are working to transform Short Breaks for adults with learning disabilities.

What has happened since the last update?

Development of a new Short Stay unit

Since our last update we have now finalised what the new building will look like. The new unit will have four bedrooms - each with en suite facilities. It will be built on Lawefield Lane, at the same time as the neighbouring day opportunities. We have used the information that current service users and carers of both current short stay units gave us about how they would like their new building to look. We also have consulted with community nurses and occupational therapists. These plans below have now been submitted for planning permission.



Lawefield Lane Respite Unit

Not to Scale





Short Breaks Update

Adults with Learning Disabilities

The current service users from Batley Road and their families were also consulted on changes to the staff team and with their help we drew up a service specification about what kind of support provider they would like. Thanks to all those who were involved in this. There will be a follow up event in the New Year. If you could not attend this event and would like more information on the new short stay unit then please contact:

Rebecca Squirrell 01924 303164 or rsquirrell@wakefield.gov.uk

Competition

**Choose a name for the New Short Break Unit?
and win a £10 high street voucher of your choice.**

**Please send the entry form at the end of the newsletter
to Rebecca Squirrell.**

**The winning entry will be announced in the next news letter in
February 2010**

Changes to the Short Stay Unit at Normanton

Over in Normanton, we have undertaken some consultation work with carers and service users to look at what people like about short breaks and what they value. Thank you to all those who took part this has helped us a lot with our planning. We hope to follow this up again in the New Year, but if you could not attend this event and would like more information then please contact:-

Lisa Willcox on 01924 303570 or lwillcox@wakefield.gov.uk

We have continued to plan to make some more environmental changes including replacing the bath and changing facilities within the shared accessible bathroom and we hope the new bath will be in place before Christmas. We are also planning to replace some of the flooring. There will be improvements to the seating including some specialist seating. These changes will give people more choices, and access to more suitable facilities, during their stay. We hope to complete this work by the start of the New Year.



Short Breaks Update

Adults with Learning Disabilities

Shared Lives

As you know the Adult Placement Team has now changed its name to Shared Lives. This is a part of a national change and the name was chosen by service users, families and carers.



We have begun to consider to how we can enable people with more complex needs to access the scheme.

- **Adaptations** This year we have had been able to fund for two Shared Lives Carers to adapt their homes to make them more accessible. These changes will give more people opportunity to consider Shared Lives as an option for Short Breaks.

There are also more plans in the pipe line so again watch this space!

- **'Contract Carer Scheme'** Planning to develop a Contract Carer scheme is in the early stages but this is an innovative idea to provide more choice for people in how they would like to receive their breaks.

What else are we doing?

Carers have asked us to develop an information service so that service users and families can find out more easily about short breaks. It is envisaged that this will be available as we implement our plans to transform services.

The New Short Breaks Allocations Policy

In previous newsletters, we have informed you of the new policy about how many short breaks nights you are entitled to. The new policy was implemented at the start of 2009. Most people have now had a Care Management Review and will be aware of their allocation of nights. Most initial feedback from carers about the policy is that this is fairer to all and clearer to understand what you're entitled to.



Short Breaks Update

Adults with Learning Disabilities

Here is a reminder –

The number of nights allocated will be decided according to the needs of the person with a learning disability and their carers following the completion or review of a Community Care Assessment and a Carer's Assessment.

There are three bands from which short breaks can be allocated:

- Band one: 24 nights (including a maximum 11 premium nights)
- Band two: 36 nights (including a maximum 16 premium nights)
- Band three: 56 nights (including a maximum 24 premium nights)

What do you do if you are still waiting for your Care Management Review or if you are not happy with your allocation?

First of all we suggest talking to your care manager to see if they can help. If you're still not happy service users and carers have a right to use the Council's Complaints procedure. Please visit www.wakefield.gov.uk for more information on our complaints procedure.

For more information on the policy please contact:

Rebecca Squirrell 01924 303164 or rsquirrell@wakefield.gov.uk

Lisa Willcox on 01924 303570 or lwillcox@wakefield.gov.uk

Alternatively contact your Care Manager:

Community Teams for Learning Disabilities- Normanton 01924 302400

Community Teams for Learning Disabilities- Outwood 01924 303485

Cut here -----

Competition Entry Form

I think the new unit should be called.....

Name

Address

Telephone Number

Please send your entry to:

Rebecca Squirrell, Learning Disability Partnership Manager.

Grange View Annie Street, Outwood, Wakefield WF1 2PW.

Competition closes 31 December 2009, the winning entrant will be notified.

This will then be published in the next issue in February 2010.