

## Section 6

# Emergency Care, Housing and Holidays



This section aims to explain more about the process of planning ahead, who can help you plan, the sorts of alternative living arrangements that are available to people with learning disabilities in Wakefield, and how to access these services.

This section includes information about:

**Emergency care**

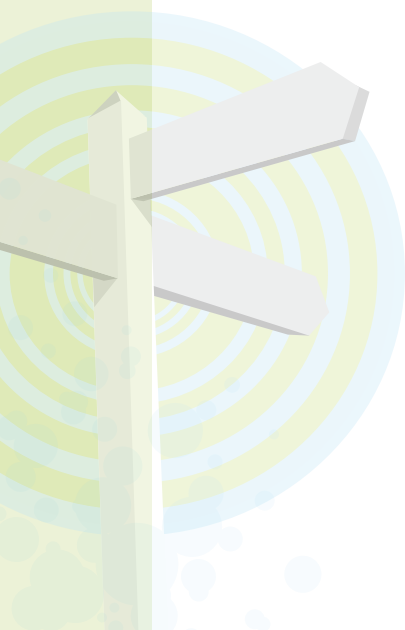
**Taking a break**

**Housing**

**Asking questions**

**Housing organisations**

**Support providers**



## Emergency care

If there is an emergency of some kind, such as a carer being rushed into hospital or dying suddenly, then the person with learning disabilities will be looked after and supported.

### **Carers Emergency Alert Card Scheme (Social Care Direct)**

The Carers Emergency Alert Card Scheme may be able to help if you provide substantial care for an adult or a child with a disability. The scheme is free to join.

- **How does the scheme work?**

You need to let Social Care Direct know who your nominated substitute carers are in an emergency. This may be family, friends, neighbours, etc, but should be someone you and the person you care for know and trust. They must agree to be nominated first so you need to ask them.

If you are involved in an emergency and you cannot care for the person you usually care for, then you or someone on your behalf can telephone the number on the card and let them know what has happened. They will then contact the people you have nominated. If they cannot reach them or they are unable to help, up to 48 hours support will be arranged for the person you care for in their own home.

- **How do I apply?**

Your social worker or local carers' centre will be able to give you an application form to complete. You will need to return this to them so that you can be sent a carers' emergency card. This card will have your name and a reference number on the back, which must be quoted in an emergency.

**Once you have your card please make sure that you carry it with you.**

- **What would a social worker do in an emergency?**

The social worker would first assess the situation and find out what needs to happen immediately. Some of the things a social worker might do include:

- Trying to contact other family members or friends, to try to arrange for the person with learning disabilities to stay with them temporarily
  - Trying to find a temporary vacancy in the short breaks services
  - Arranging for someone from the short breaks service or a support provider to come in and support the person with learning disabilities at home during various times throughout the day, and perhaps even staying with them at home overnight.
- **After the emergency...**

When the initial emergency is over, if the carer is still able and willing to support the person at home – and that is what everyone wants – everything will go back to the way it was before the emergency. In some cases, extra services could be put into the home, such as additional help with personal care and domestic chores.

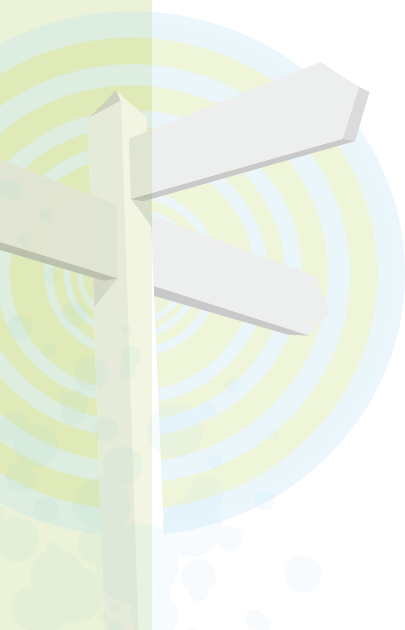
If it becomes clear that the carer will no longer be able to support the person with learning disabilities at home, then the social worker will begin working with that person to develop a long-term plan for the future. If the carer is still able to contribute to the planning, then their expertise and knowledge of the person will be an essential part of the process.

- **If the person you care for will always be taken care of in an emergency, what is the point of planning ahead?**

Although the person with learning disabilities will be taken care of in an emergency, there are many disadvantages if you wait until then. There have been instances where carers have been taken ill or died, and in a short space of time, the person they have cared for has had to cope with the loss while living in an unfamiliar environment. On the whole, it can be a very distressing time.

## **The advantages of planning ahead include:**

- More time to look at different options
- More choice about long term options
- Chance to cope better with change – for carers and people with learning disabilities
- Opportunity to share expertise – carers will be able to share all the essential knowledge they have with the paid carers
- Carers should have more peace of mind knowing that the person they care for is settled, safe and happy
- If the person with learning disabilities does make a planned move into alternative care, then they will have support to help them cope with future traumas, such as the shock of bereavement

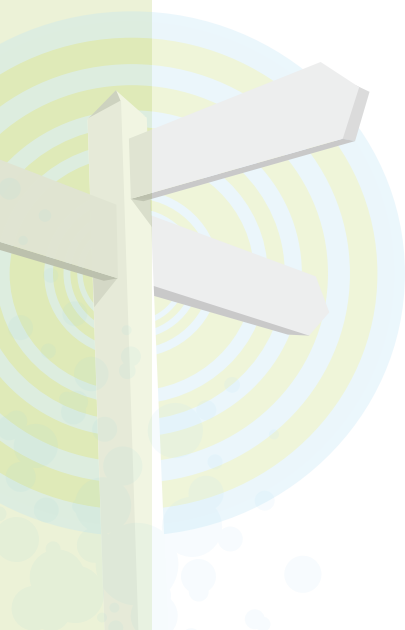


## **SeniorLink Service (Help the Aged)**

SeniorLink is a response service provided by Help the Aged, enabling you to stay in your own home safe in the knowledge that there is always someone there for you. Using the telephone line, it links you to the highly trained staff at a 24 hour Response Centre.

The SeniorLink Service comprises of a Response unit, pendant or wrist strap, together with monitoring and maintenance. The pendant or wrist strap allows you to call the Response Centre from anywhere in your home within 25m (82ft) of the unit – so you don't have to be near the unit itself. By pressing the button on your unit or on your pendant or wrist strap, you will be connected immediately to the Response Centre who will then respond to your needs quickly and efficiently.

**For more information call 0845 603 4576.**



## Taking a break

As a carer, you will know the stress of looking after someone can take a toll, and it is vital for many to get a break from the caring role. In Wakefield, there are many different types of services and support aimed at directly supporting carers to take a break.

While some non-statutory services can be accessed directly, an assessment will need to be completed to access others. You may need to contact a social worker to ask them to complete an assessment. While this assessment is carried out, you should make sure that the worker fills in a carers assessment with you.

In addition, carers have the right to ask for an assessment of their needs to be completed, whether or not the person they care for is having an assessment. You should be given a copy of the assessment so that you have a record of what has been written.

For more information on the Carers Assessment, see:

### **Section 1: Carers and support in the community – Care Management and Assessment**

#### **Short breaks (respite)**

Some people find short breaks useful as a way of helping to prepare people with learning disabilities to live away from home. Short breaks could involve anything from a few hours to overnight stays away from home. Some of the different types of short breaks in Wakefield include stays in a specialist short break unit, or with other families through Shared Lives or by using direct payments to buy a personalised short break.

Short breaks can be extremely valuable for many carers of people with learning disabilities. For a number of families, having a regular break gives them the time they need to rest, recharge, and spend some time looking after their own needs. In turn, this will hopefully help them continue to provide care at home for as long as they wish to do so.

Short breaks can be equally valuable for people with learning disabilities. They can provide an opportunity to mix with other people and make new friends, get used to spending some time away from family, and develop new skills.

All short breaks are allocated in accordance with the 'Allocation of Nights' policy. This can be obtained through [www.wakefield.gov.uk](http://www.wakefield.gov.uk) or from the Community Teams for Learning Disabilities.

### **Short Break Units**

There are two residential short breaks units in Wakefield, in Normanton and Wakefield city centre. The units support people with varying degrees of learning disabilities to have a break away from the family home.

Both short breaks facilities are modern buildings each having four bedrooms with their own ensembles, an accessible bathroom, a kitchen, a dining room, living room(s) and a spacious garden.

The short breaks units are available for anyone with a learning disability who is living at home with family, aged between 18-64 years old and living within the Wakefield district.

Access to the short breaks units will be through care managers in the Community Teams for Learning Disabilities (CTLDs). Contact **Social Care Direct** for further guidance and information.

### **Shared Lives (Adult Placement)**

Shared Lives offers short breaks and long term placements to adults with a disability. Shared Lives carers can offer planned flexible support either by:

- Welcoming the person into their home for a day, an occasional weekend, a couple of weeks or a longer stay
- Going out with them on day trips, visits and leisure activities.

All Shared Lives carers have been approved by Wakefield Council Family Services. Carers can be people from a variety of backgrounds who all have an interest in supporting people who have a disability.

An important feature of the service is the matching of carers and the people who use the service to make sure that the placement is

successful. You will be given the opportunity to visit the prospective adult placement carer's home before deciding whether you want to stay with them.

Access to the Shared Lives service will be through care managers in the Community Teams for Learning Disabilities (CTLDs) through **Social Care Direct**.

## Shared Care

- **What is Shared Care?**

In some family situations, it might be assessed that a service user requires over and above the maximum number of allocated nights available through short breaks.

Where it is assessed that it is in the best interests of the service user to spend regular weekly periods of time away from the family home, this is no longer a Short Break, but becomes Shared Care.

Shared Care is a planned care package, and should be provided within a homely, supportive family setting to provide consistency, continuity and stability. Positive relationships can therefore be developed to support the service user and their family.

Alternatively, Individual Budgets could be used to provide continuity of a Shared Care arrangement in a person-centred way. Families can choose to be given the payments to buy their own care as an alternative to care arranged and provided by Family Services. This can be an excellent way of having more choice and control of the short break that you and the person with learning disabilities want to take.

Individual Budgets are available to all people following an assessment of need. Please contact **Social Care Direct** or your care manager for more information.

## My Time Carers Breaks and Support

The 'My Time' Carers Breaks and Support scheme enables the carer to apply for a maximum of £200 per year to get a break from caring.

- **What is it?**

Funded from the government's Carer Grant, My Time provides support to carers to help get a break from caring. Essentially it is up to you, the carer, to decide what would give you a break. It may be a holiday, a weekend break, a college course, a social evening or maybe even learning to drive to ultimately make your caring responsibilities that bit easier.

- **Who is it for?**

A carer is anyone who is looking after a relative, friend or neighbour, on an unpaid basis, and providing substantial and regular support (practical and/or emotional) for an average of at least 35 hours a week. The scheme is for carers of any age, gender, background or culture.

- **Will I qualify?**

Applicants must have been caring for at least 12 months and be resident within the Wakefield district. The scheme is also open to former carers whose caring role ceased within the last 12 months. Although there are other rules and eligibility criteria, (full details of which will be sent out with the application form) if you feel that you fit the picture outlined here then it is worth requesting an information pack.

- **How do I apply?**

Application forms are available from the **Carers Wakefield** office on King Street, Wakefield (to where they should also be returned), and can be requested in person, by phone, post or email. Applications will be reviewed on a monthly basis and must be received by the 15th of each month.

- **What else must I do?**

All applications must be verified by a professional, e.g. doctor, social worker, who is aware of your caring situation. That person will be contacted before any money is released. A quote or breakdown of costs will also be required from the break provider.

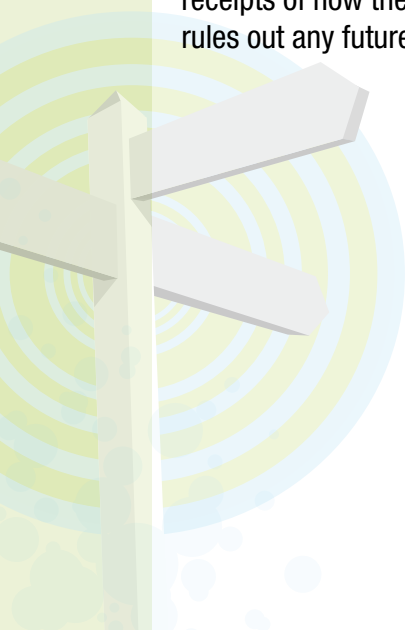
- **When will I know if I have been successful?**

If your application is received by the deadline, then you can expect to hear the outcome, together with payment if you are successful, by the end of the month. However, you must ensure that the application form is completed in full, and that the professional verifier can be contacted.

You should also bear in mind that valid applications will be awarded in order of date received. However, you can specify that you want your application to 'roll over' to the following month if you are not immediately successful. You should therefore not make any firm bookings on the assumption that you will be successful. Carers are allowed 6 months in which to take up the service from the time it is awarded before it must be returned if not used.

- **Once you have received an award...**

Carers must complete a brief feedback questionnaire and provide receipts of how the money has been spent. Failure to do so automatically rules out any future applications



## Holidays

Many carers and the people they care for find holidays one of the most useful forms of short break care. Some of the organisations that offer services to people with learning disabilities also offer annual holidays or day trips.

You may be able to get the information you need to find the right break for you from a travel agent, or by looking at brochures from travel companies. The travel industry is becoming increasingly aware of disabled customers' needs, and some companies have specialists to help you plan a suitable holiday.

However, it may be that your holiday needs are more specialised, perhaps because you want to take your break with the person you care for and they need accommodation that has particular equipment or adaptations. Alternatively, you might want to go somewhere where care is provided. In these cases, you might want to consider some of the suggestions below.

Every carer's situation is different, but you will need to consider most of the following:

- Is the place you are considering used just for holidays/breaks, or is it for permanent residents with a few temporary beds?
- Are meals provided?
- Is there flat access and disabled parking close by? Is there suitable parking in nearby towns?
- Are doors wide enough for wheelchairs? Are hoists, grab rails, suitable showers, etc available?
- Can extra care, nursing care, or a sitting service be provided if necessary?
- If self-catering, is linen provided? Is heating included?

You can also ask advice from the tourist information centre for the town or area you wish to visit.

Contact numbers for these can be obtained from the **British Tourist Authority**.

## Help with holidays

### Holiday Care

**Address:** Tourism for All, The Hawkins Suite, Enham Place,  
Enham Alamein Andover SP11 6JS

**Tel:** 0845 124 9971

**Fax:** 0845 124 9972

**Minicom:** 0845 124 9976

**Email:** [info@tourismforall.org.uk](mailto:info@tourismforall.org.uk)

**Web:** [www.holidaycare.org.uk](http://www.holidaycare.org.uk)

This is a central source of holiday information and support for disabled people and older people and their carers. It provides information on accessible accommodation and attractions, insurance, travel, and sources of holiday funding for those on a low income. They also have a database of respite care facilities in the UK, and villas abroad, where disabled people can stay with or without their carers.

### DIAL Holiday Accommodation Directory

**Address:** St Catherine's, Tickhill Road, Doncaster DN4 8QN

**Tel:** 01302 310 123

**Fax:** 01302 310 404

**Textphone:** 01302 310 123

**Email:** [informationenquiries@dialuk.org.uk](mailto:informationenquiries@dialuk.org.uk)

**Web:** [www.dialuk.info](http://www.dialuk.info)

DIAL publish a guide to accessible holidays in the UK. To obtain a copy contact the DIAL Information Service.

### Extra help and care on your break

Although some break providers include care or sitting services, you may want to think about arranging with a local care agency to give you some help. A list of accredited agencies nationwide can be obtained from the **United Kingdom Homecare Association**.

## **Carers' Centres**

Many towns and cities now have a Carers' Centre and will have local knowledge about facilities and services in their area. For the details of the nearest Carers' Centre contact **Carers UK** or **Carers Direct**.

### **Leonard Cheshire Disability (North East & Yorkshire Region)**

**Address: Unit 7 Clifton Moor Business Village,  
James Nicolson Link, York YO30 4XG**

**Tel: 01904 693422**

**Fax: 01904 693260**

**Email: [northeastandyorksoffice@lcdisability.org](mailto:northeastandyorksoffice@lcdisability.org)**

Leonard Cheshire Disability exists to change attitudes to disability and to severely disabled people around the world. In the UK, services in support of disabled people include care homes, supported living, domiciliary support, day services, resource centres, rehabilitation, respite care, personal support and training and assistance for those looking for work.

### **The Retreats Association**

**Address: The Retreats Association, The Central Hall, 256  
Bermondsey Street London SE1 3UJ**

**Tel: 020 7357 7736**

**Fax: 0871 715 1917**

**Email: [info@retreats.org.uk](mailto:info@retreats.org.uk)**

**Web: [www.retreats.org.uk](http://www.retreats.org.uk)**

Some carers just want to get away and have some time to themselves. Going on a retreat doesn't mean you have to be religious; rather it will provide you with a place to think and be quiet. Some retreats will let you be alone, others have organised time with a guide to help you.

## **The Kiloran Trust**

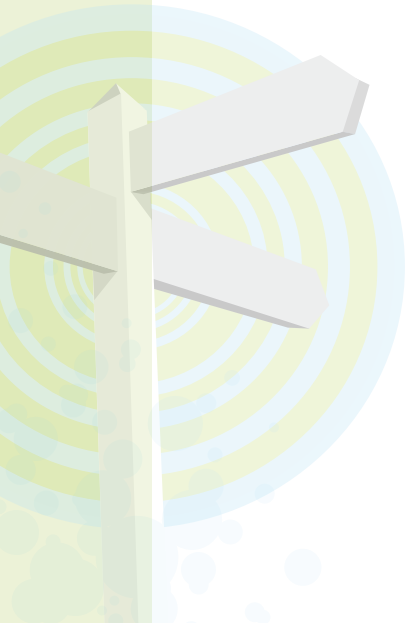
**Address: 0207 602 7404**

**Fax: 0207 602 3303**

**Email: [info@kilorantrust.org.uk](mailto:info@kilorantrust.org.uk)**

**Web: [www.kilorantrust.org.uk](http://www.kilorantrust.org.uk)**

The Kiloran Trust is a charity in West London that offers a break to carers. It gives carers a chance to enjoy London's attractions, or to have time to themselves to relax, reflect and recharge their batteries. Funding can be found for those on income support or a pension to cover the cost of their stay.



# Housing

## Planning ahead

It can be difficult thinking about the future of the person with learning disabilities you care for. It is important that you feel safe enough to explore the different options, and understand the processes without feeling judged or pressurised into doing something with which you are not happy. Naturally, your highest priority will be making sure that any plans for the person you care for involve them, and meet their needs and wishes as much as possible. As carers providing the majority of care and support, you have the right to have your opinions heard and valued in a non-judgemental way.

The following information highlights some of the main points you may need to consider when the time comes for you all to start planning for the future. This information is not particularly detailed, as it is only intended as a starting point to help you feel more confident when thinking about the future.

## Long-term options

There are many different types of long-term options that may be available to the person with learning disabilities you care for. Accommodation for people with learning disabilities has changed a lot in the last few decades. Since the Community Care Act, accommodation for people with learning disabilities is provided in the community.

## Living independently (with support)

Some people with learning disabilities are able – and choose – to live independently with support. This may be in the family home if the property has been left to them in Trust or properties through Wakefield District Housing or Housing Associations, or even own their own properties in Shared Ownership Schemes with a housing association.

It is important for people with learning disabilities to have a Needs Assessment to make sure that they are able to cope in such a setting. In many cases, the assessment results in the person receiving regular support for specific tasks from outreach or agency workers.

For information on Needs Assessment, see :

## Section 1: Carers and support in the community

Living independently does not suit everyone however, many people with learning disabilities thrive in an independent setting, and enjoy being part of a community. If it seems likely that the person you care for would like to live independently, then it would be good to support them in making the move as early as possible. That way, you have the chance to help them settle and feel safe, and you can ensure the correct systems to support their needs are in place.

### Some of the different options....

The following list is meant to outline some of the different options available to people with learning disabilities in a very basic way. Naturally, since everyone is different, some of the options outlined below will be unsuitable for the person you care for. However, you may find some ideas within them that you can explore with a care manager.

- **Supported Living**

Supported Living Schemes are slightly different from living totally independently, because accommodation often consists of a number of individual flats that are located near each other, or a shared house. Residents are assessed as needing a certain amount of daily or weekly support, to be provided by the support workers on site. For example, workers may help with cooking, shopping, and budgeting. In many of the independent living schemes, there will be a worker on duty at all times in case of emergency. This support is provided by one of the support providers in the area.

- **KeyRing**

The KeyRing scheme is an independent living scheme. Ten ordinary properties are scattered around a small neighbourhood, within ten minutes walk of each other. Nine flats or houses are for people with learning disabilities. The tenth flat is for KeyRing's community living volunteer, who provides advice and support to members as and when they need it. The mutual support between members helps people to

make friends and to develop their confidence and independence.

KeyRing aims to provide support by drawing on the skills and experiences of all the network members as well as that of the volunteer. KeyRing is also keen to promote community connections to provide additional opportunities and support for members.

### **Who can be a KeyRing member?**

- Applicants with a learning disability
- Applicants who have a need for independent housing with appropriate support
- Applicants must have an understanding of fire risks
- Applicants must have basic skills; looking after money, shopping, cleaning and must not need help with personal care
- Applicants must not have behavioural difficulties or mental health difficulties which would require a higher level of support and monitoring than is available within the Network.

If KeyRing members require more support to develop and gain independence, then care managers could commission a separate provider to be included in the member's overall support package to complement the KeyRing scheme. See [www.keyring.org](http://www.keyring.org).

### **Residential Homes**

Some people with learning disabilities choose to live with other people in residential accommodation. The level of support in these homes can vary greatly according to the needs of the people living there. For example, in some homes there is 24-hour staff coverage; while other homes may not have staff on site overnight, but can be contacted at homes nearby.

### **Shared Ownership**

#### **What is Shared Ownership?**

Shared Ownership is a way of buying your own home. It might be a way of getting more choice about where a person with learning disabilities lives and the support they get.

## **What can I buy?**

You buy a share and pay rent for the rest. You do not live in the house with anyone else – unless you want to. You just share the ownership with a Registered Social Landlord - the new name for Housing Associations.

## **Paying for your home**

You can buy your share with cash or by getting a mortgage. Some people can pay a small mortgage from their benefits or with help from relatives. Others can get Income Support to pay the interest on their mortgage.

For more information on Shared Ownership visit the **Housing Options** website at **[www.housingoptions.org.uk](http://www.housingoptions.org.uk)**

### **Housing Options**

**Address: Stanelaw House, Sutton Lane, Sutton, Witney,  
Oxfordshire OX29 5RY**

**Tel: 0845 4561497**

**Email: [enquiries@housingoptions.org.uk](mailto:enquiries@housingoptions.org.uk)**

**Web: [www.housingoptions.org.uk](http://www.housingoptions.org.uk)**

Housing Options is an independent advice and information service for people with learning disabilities. The aim is to assist people with learning disabilities achieve greater control over aspects of their life and to provide more housing and support choices - more options for individuals, parents, social services, and care agencies.

Housing Options exists to help people obtain the best option for their circumstances and this includes independent supported living and home ownership for people with learning disabilities. It does this by providing practical help, advice and information. It can be a gateway to accessing different types of social housing. Visit the Housing Options website for leaflets on all the different types of housing options.

## Asking questions

If you are visiting any places, do not be afraid to ask to ask questions. It may be a good idea to think about the things that you and the person you care for would like to know in advance, and write them down so that you don't forget anything important.

Some of the questions that many carers ask include:

- How can I be sure they will be safe?
- How will the placement be funded?
- What sort of support will they receive?
- How much money will they get?
- Can they visit home?
- What if they are not happy?
- Can they go on holiday?
- What happens if they become ill?
- What training have staff had?
- Is the place able to meet any cultural or religious needs?
- Who will help with things like shopping for clothes?
- Will we still have a role when they are not living at home?
- Can they still go to their regular day services and activities?
- Does the place run any activities?
- Will they have their own room?
- What can they bring with them?
- Can they choose what they want to eat?
- Can they choose how the room is decorated?
- Is there any transport?
- Can I contact them and the staff whenever I want to?
- What if I have more questions?

## **Moving**

It is worth noting that if you all decide that a placement away from home is what you want and a vacancy does come up, you should not feel rushed into accepting. The person you care for will have the chance to visit a number of times, and will gradually build up their time at the new place – perhaps staying for meal times and longer periods until they are ready to spend the night or a weekend there. Even if you do accept the place in a residential home, there will probably be a probationary period to check that everything is working out well for everyone. This time will give you all, including any people sharing with the person you care for, the chance to get to know each other and feel safe, comfortable, and confident about the future.

## **Remember...**

Although it is preferable to try to begin planning as early as possible, it is important that your expectations are not raised unrealistically high. Although it is definitely preferable to plan before a crisis, there are certain factors that must be taken into account:

- There are no guarantees that funding for new care packages will be available.
- Unless you are deemed a priority, you may have to wait before a social worker is allocated to you to complete the assessment, and support you to look at options in more detail.
- It may take a long time for you to find a placement with a vacancy that you are happy with, since homes tend to be permanent unless a person's needs change significantly.
- If a place is found in shared accommodation, it is important that the people already living there feel happy and comfortable with the new person and vice versa.
- There are no such things as waiting lists. It is possible to make it clear that you are interested in a placement but, if a vacancy becomes available, there are no guarantees you will get it, particularly if there is someone in greater need also waiting

However, please don't let this put you off thinking ahead now – the earlier you start to face the future, the more time there will be to remove the obstacles above.

## Housing organisations

### **Wakefield and District Housing (WDH)**

**Address:** Head Office, Merefield House, Whistler Drive, Castleford WF10 5HX

**Tel:** 0845 8 507 507. Typetalk calls welcome.

**Web:** [www.wdh.co.uk](http://www.wdh.co.uk)

WDH is a registered charity, responsible for over 31,000 homes, lived in by over 100,000 people in the Wakefield district. They manage over 50 sheltered housing schemes for elderly and vulnerable people. They provide a range of specialist services to meet the needs of vulnerable people. WDH's OneCALL operate 24 hours a day, seven days a week helping tenants with enquiries on any housing issue including repairs, anti-social behaviour, rents and general enquiries.

### **Chevin Housing Group – Wakefield (Head Office)**

**Tel:** 01924 290949

**Fax:** 01924 363595

**Email:** [enquiries@chevinha.co.uk](mailto:enquiries@chevinha.co.uk)

**Web:** [www.chevinha.co.uk](http://www.chevinha.co.uk)

A charitable association, which owns and manages around 6,000 rented homes for people with a wide range of needs, including single people, families, older people and people with support needs.

### **English Churches Housing Group (ECHG)**

**Address:** Marsh Way House, 10 Arundel Way, Wakefield WF1 3LF

**Tel:** 01924 369415

**Email:** [kevin.ponting@echg.org.uk](mailto:kevin.ponting@echg.org.uk)

ECHG is a specialist provider of older persons and supported housing services, and has a long history of providing homes and services in schemes across the whole of England.

## **Yorkshire Metropolitan Housing**

**Address: Yorkshire House, 6 Innovation Close, Heslington,  
York YO10 5ZF**

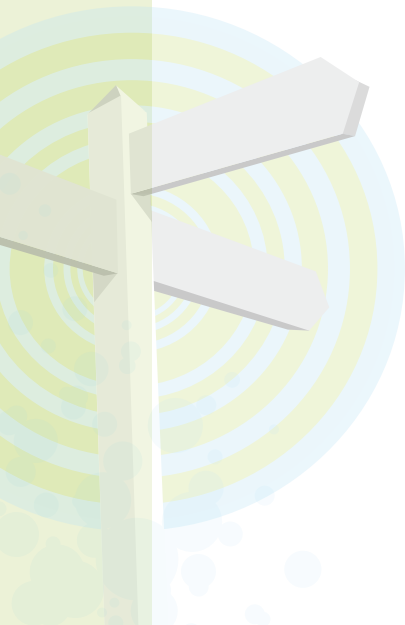
**Tel: 01904 754 400 (9am - 4:30pm, Monday to Friday)**

**Fax: 01904 754 444**

**Email: [enquiries@yorkshirehousing.co.uk](mailto:enquiries@yorkshirehousing.co.uk)**

**Web: [www.yorkshirehousing.co.uk](http://www.yorkshirehousing.co.uk)**

A charitable organisation, which provide affordable rented homes, low cost ownership schemes and support to homeowners who are elderly, disabled or vulnerable in a number of local authorities.



## Support providers

For information on care homes in Wakefield (for the elderly and people with learning disabilities) visit [www.wakefield.gov.uk](http://www.wakefield.gov.uk). Go to Health and Social Care – Adults and Older People – Residential Care.

### **Avalon Group**

**Tel: 01924 439913**

**Email: [sharonhold@avalongroup.org.uk](mailto:sharonhold@avalongroup.org.uk)**

**Web: [www.avalongroup.org.uk](http://www.avalongroup.org.uk)**

A northern-based, not-for-profit organisation and registered charity. They provide a range of services to support vulnerable adults, especially disabled people, to make their own choices in life.

### **Choice Support**

**Address: Unit 5, Clarke Hall Farm, Aberford Road,  
Wakefield WF1 4AL**

**Tel: 01924 299399**

**Email: [rachael.priest@choicesupport.org.uk](mailto:rachael.priest@choicesupport.org.uk)**

**Web: [www.choicesupport.org.uk](http://www.choicesupport.org.uk)**

The service provides supported living, outreach support and day activities. Services are person-centred and designed to actively support individuals to plan for, and take greater control of their lives in the community.

### **TACT North**

**Address: 8 Springwell Court, Holbeck, Leeds LS12 1AL**

**Tel: 0113 242 1388**

**Email: [tactnorth@tactltd.org](mailto:tactnorth@tactltd.org)**

**Web: [www.tactltd.org](http://www.tactltd.org)**

TACT support people with learning disabilities to pursue active and fulfilling lives, gain increased independence and achieve equal rights as a citizen.

### **Dimensions UK – North Central**

**Address: 5 Thornes Office Park, Monckton Road, Off Denby Dale Road, Wakefield WF2 7AN**

**Tel: 01924 205420**

**Email: [carol.phillips@dimensions-uk.org](mailto:carol.phillips@dimensions-uk.org)**

**Web: [www.dimensions-uk.org](http://www.dimensions-uk.org)**

Dimensions help people aged 16 and over with learning disabilities to live the lives they want. They provide supported living schemes, Outreach services, short breaks, group living schemes, transitions support, carers support, registered care homes, and also autism and complex needs services.

### **Real Life Options (Yorkshire)**

**Address: Offices 2706 - 2708 Concourse House, 432 Dewsbury Road, Leeds LS11 7DF**

**Tel: 01132 702 270**

**Email: [info@reallifeoptions.org](mailto:info@reallifeoptions.org)**

**Web: [www.reallifeoptions.org](http://www.reallifeoptions.org)**

Real Life Options vocational services focus directly on enhancing social inclusion. Their aim is to support and encourage people to achieve their goals and dreams – from making a cup of tea to finding employment. People are assisted to access a wide range of ordinary opportunities, to engage in wider community activities, make new friends and become a valued member of their local community.

### **Focus Care Services**

**Address: 32 Wood Street, Huddersfield, Hd1 1DX**

**Tel: 01484 515 332**

**Email: [info@focuscareservices.com](mailto:info@focuscareservices.com)**

**[www.focuscareservices.com](http://www.focuscareservices.com)**

Provides community based support and enablement services including residential care and supported living.

## **UBU**

**Address: 9 Haywra Street, Harrogate, HG1 5BJ**

**Tel 01423 858 687**

**Email: [enquiries@ubu.me.uk](mailto:enquiries@ubu.me.uk)**

**[www.ubu.me.uk](http://www.ubu.me.uk)**

UBU is an independent company that provides care, enablement and support to adults, children and young people with learning disabilities and complex behavioural needs.

## **Lifeways Community Care**

**Address: Office D175, Dean Clough, Halifax, HX3 5AX**

**Tel: 01422 380022**

**[www.lifeways.co.uk](http://www.lifeways.co.uk)**

Lifeways offers a wide range of personally tailored services for people who need ongoing social care support including supported living, residential care and individual support services.

## **Millennium Care Services**

**Address: Millennium House, Station Lane, Featherstone**

**Tel: 01977 602867**

**Fax: 01977 602798**

**[www.mcare.info](http://www.mcare.info)**

The service offers a variety of provision - Residential, Supported Living and Domiciliary, together with an Activity Resource Centre.